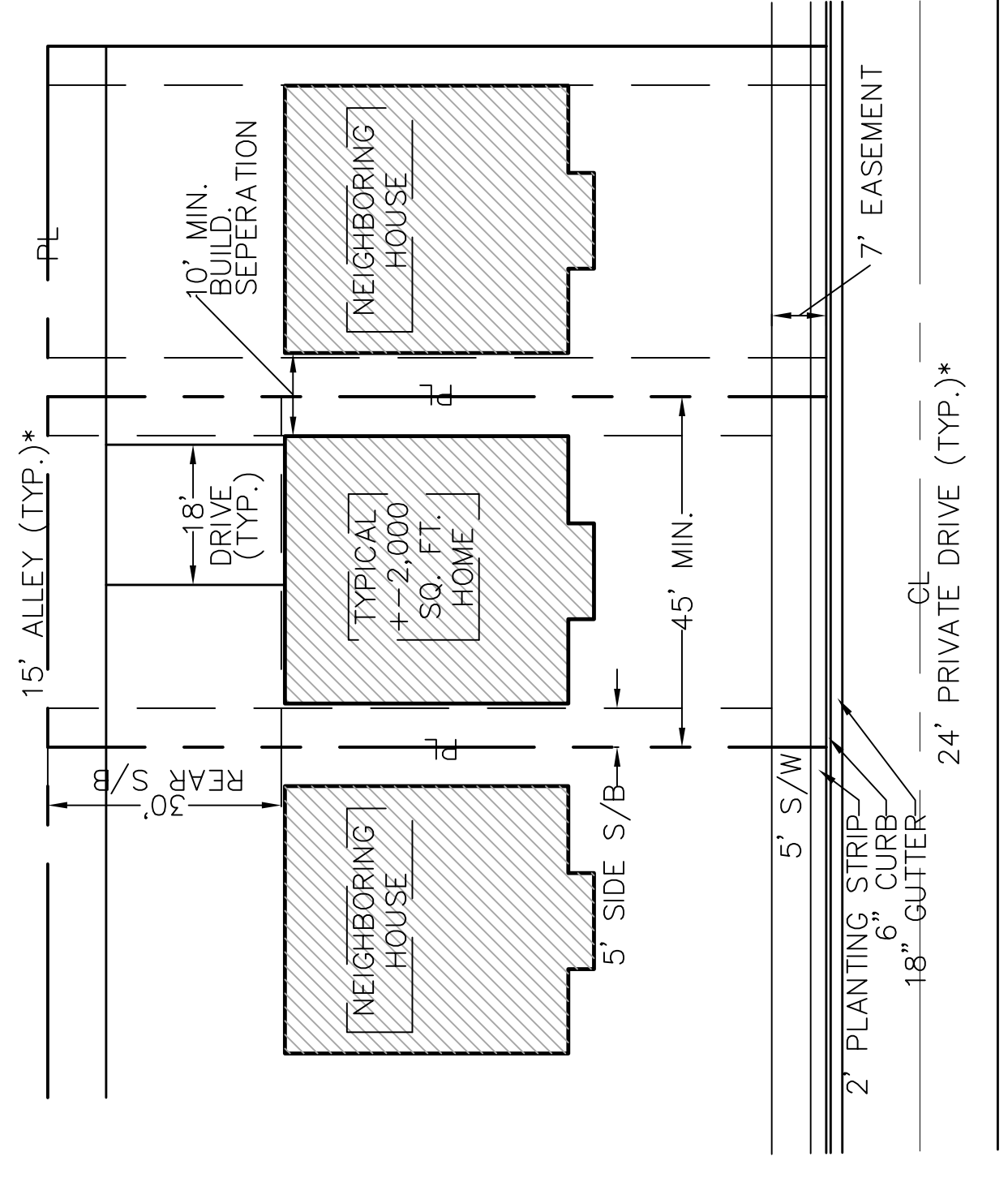


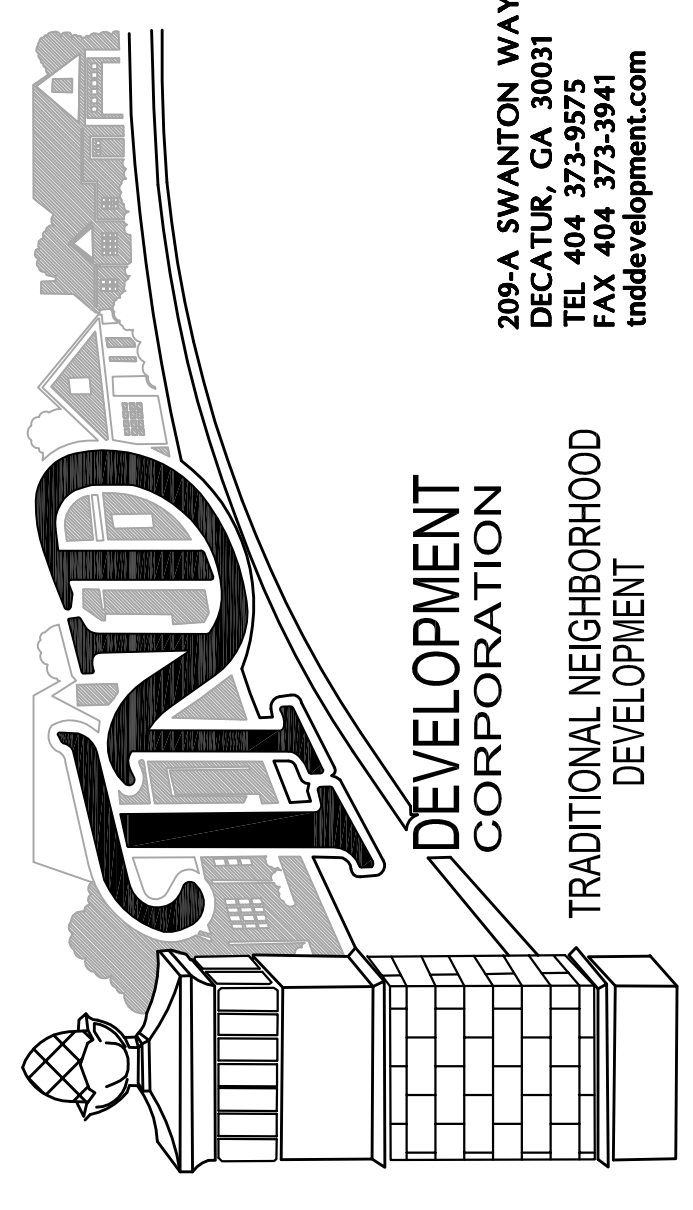
**SITE SUMMARY**

**SITE INFORMATION**  
 CURRENT ZONING: R-20  
 PROPOSED ZONING: RAD CONDITIONAL  
 TOTAL SITE AREA: 7.963 ACRES

**LOT INFORMATION**  
 NUMBER OF LOTS: 32 UNITS  
 MINIMUM LOT SIZE (45X100): 4,500 SF  
 MIN. DISTANCE BETWEEN STRUCTURES: 10'  
 PROPOSED DENSITY: 32 UNITS/7.963 AC.=4.018 UNITS/ACRE



TYPICAL LOT PLAN  
 SCALE: 1"=20"  
 \* PRIVATE DRIVES WILL BE OWNED & MAINTAINED BY HOMEOWNERS ASSOCIATION

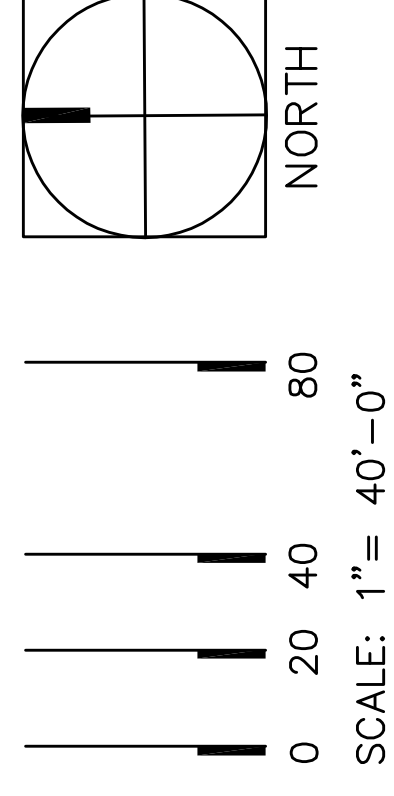
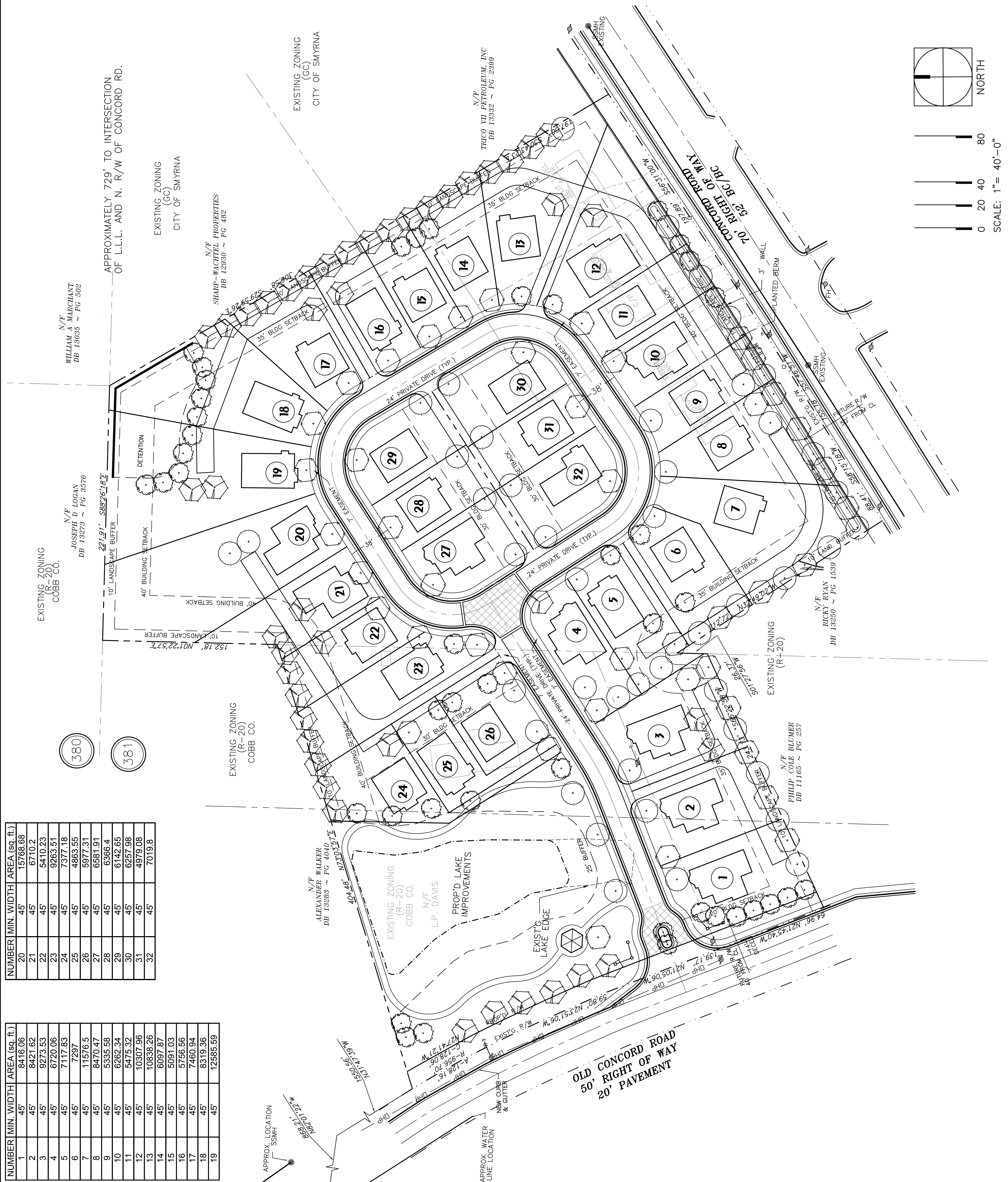


**CONCORD ROAD TRACT**

**ZONING PLAN**  
 TRACT LOCATED IN LAND LOT 381  
 17TH DISTRICT, 2ND SECTION COBB CO., GEORGIA

DATE: 11/05/03

Prepared By:  
**Site Development Consultants, Inc.**  
 Land Planning Site Development Landscape Architecture  
 2790 Sandy Plains Road, Suite 301  
 Marietta, Georgia 30066  
 Tel: (678)236-0720



NUMBER	MIN. WIDTH	AREA (sq. ft.)
20	45'	15768.68
21	45'	6710.2
22	45'	5410.23
23	45'	9263.51
24	45'	7377.18
25	45'	4863.55
26	45'	11576.5
27	45'	8470.47
28	45'	5335.58
29	45'	6262.34
30	45'	6142.65
31	45'	6257.98
32	45'	10307.96

NUMBER	MIN. WIDTH	AREA (sq. ft.)
1	45'	8416.06
2	45'	8421.62
3	45'	9273.53
4	45'	6720.06
5	45'	7117.83
6	45'	7297
7	45'	11576.5
8	45'	8470.47
9	45'	5335.58
10	45'	6262.34
11	45'	6142.65
12	45'	10307.96
13	45'	10838.26
14	45'	6097.87
15	45'	5091.03
16	45'	5756.56
17	45'	7460.94
18	45'	8319.36
19	45'	12585.59