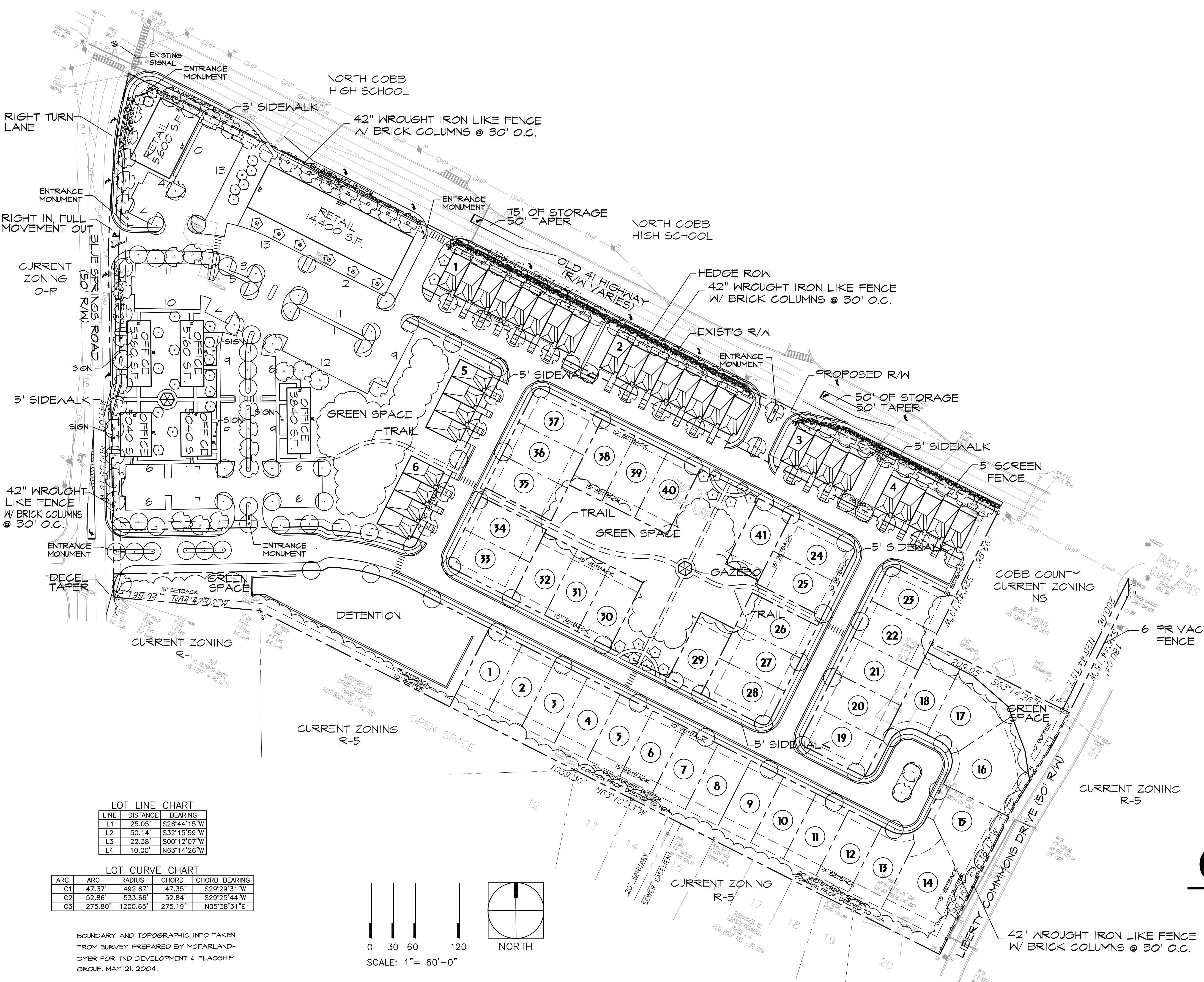
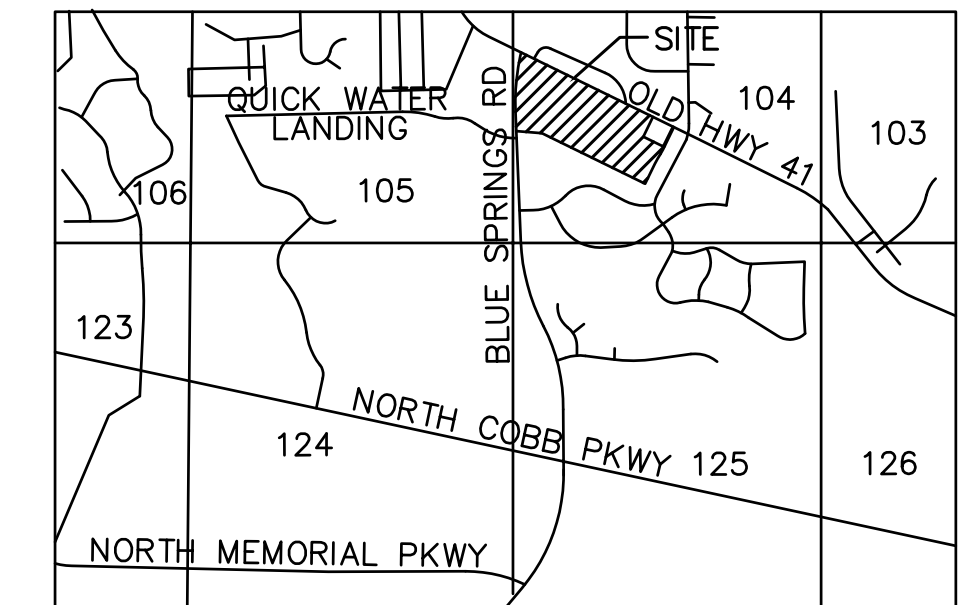


SITE SUMMARY

SITE INFORMATION	
CURRENT ZONING:	C-2
PROPOSED ZONING:	MU
TOTAL SITE AREA	17.889 ACRES
RETAIL/COMMERCIAL	
USE RATIO	11.9%
FLOOR AREA	20,000 S.F.
PARKING REQUIRED (1/400 S.F.)	50 SPACES
PARKING PROVIDED	103 SPACES
OFFICE	
USE RATIO	15.1%
FLOOR AREA	25,440 S.F.
PARKING REQUIRED (1/400 S.F.)	64 SPACES
PARKING PROVIDED	101 SPACES
SINGLE FAMILY	
USE RATIO	43.7%
FLOOR AREA (41@1800 S.F.)	73,800 S.F.
LOTS (50'X100')	41
TOWNHOMES	
USE RATIO	29.3%
FLOOR AREA (33@1500 S.F.)	49,500 S.F.
TOWNHOMES	33
DENSITY RESIDENTIAL	74 UNITS/ 17.889 ACRES= 4.13 UN/AC
TOTAL BLDG. S.F.	168,740 S.F.
GREEN SPACE PROVIDED (20.6%)	3.69 ACRES

TRACT LOCATED IN LAND LOT 104, 20TH DISTRICT 2ND SECTION, CITY OF ACWORTH, COBB COUNTY, GEORGIA

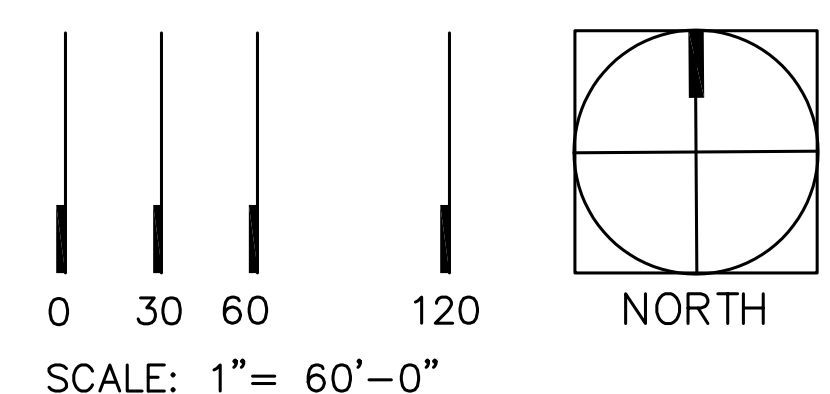


LOT LINE CHART

LINE	DISTANCE	BEARING
L1	25.05'	S26°44'15"W
L2	50.14'	S32°15'59"W
L3	22.38'	S00°12'07"W
L4	10.00'	N63°14'26"W

LOT CURVE CHART

ARC	ARC	RADIUS	CHORD	CHORD BEARING
C1	47.37'	492.67'	47.35'	S29°29'31"W
C2	52.86'	533.66'	52.84'	S29°25'44"W
C3	275.80'	1200.65'	275.19'	N05°38'31"E



BOUNDARY AND TOPOGRAPHIC INFO TAKEN FROM SURVEY PREPARED BY MCFARLAND-DYER FOR TND DEVELOPMENT & FLAGSHIP GROUP, MAY 21, 2004.

FLAGSHIP GROUP INC.
 REAL ESTATE DEVELOPMENT • MANAGEMENT • INVESTMENT
 2300 WINDY RIDGE PARKWAY SUITE 50 ATLANTA, GA 30339
 TEL 770.956.9797 • FAX 770.952.2440

TND DEVELOPMENT CORPORATION
 TRADITIONAL NEIGHBORHOOD DEVELOPMENT
 209-A SWANTON WAY
 DECATUR, GA 30031
 TEL 404 373-9575
 FAX 404 373-3941
 tnddevelopment.com

OLD 41 HIGHWAY ZONING PLAN

DATE: 7/27/04

Prepared By:
Site Development Consultants, Inc.
 Land Planning • Site Development • Landscape Architecture
 2790 Sandy Plains Road, Suite 301
 Marietta, Georgia 30066
 Tel: (678)236-0720